

CHIROPRACTORS AS PART OF THE TEAM

Interprofessional primary care teams are designated to work collaboratively to provide coordinated and patient-centred care.

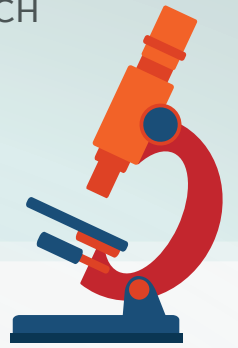


HOSPITALS

PART OF COMMUNITY-BASED FAMILY HEALTH TEAM

OCCUPY SPECIALTY RESEARCH AND CLINICAL ROLES

PLAY A ROLE IN TRIAGE OF MSK CONDITIONS



STRENGTHENING THE HEALTHCARE TEAM

Play a role in the assessment, diagnosis and management of MSK conditions.

Complement program delivery to support patients with chronic conditions, managing underlying MSK conditions.



ACADEMIC/RESEARCH

- CANADA RESEARCH CHAIRS IN 15 UNIVERSITIES ACROSS CANADA
- ADVANCE RESEARCH IN CLINICAL, BIOMEDICAL, HEALTH SERVICES AND POPULATION HEALTH RESEARCH
- ACCESS FUNDING GRANTS TO SUPPORT RESEARCH TO MITIGATE THE BURDEN OF DISEASE AND DISABILITY
- COLLABORATE WITH INTER-PROFESSIONAL TEAMS



ATHLETES



SUPPORT AMATEUR SPORTS



MOVEMENT LITERACY



INTEGRATED SUPPORT TEAMS – OLYMPIC AND ELITE ATHLETES

PERFORMANCE ENHANCEMENT AND INJURY PREVENTION

COMMUNITY

- ✓ PRIMARY CONTACT PROVIDER
- ✓ ASSESS, DIAGNOSE AND MANAGE PATIENTS
- ✓ PLAY A ROLE IN RETURN TO WORK
- ✓ ADDRESS ACTIVITIES OF DAILY LIVING
- ✓ COLLABORATE WITH HEALTHCARE PROVIDERS AND PATIENTS